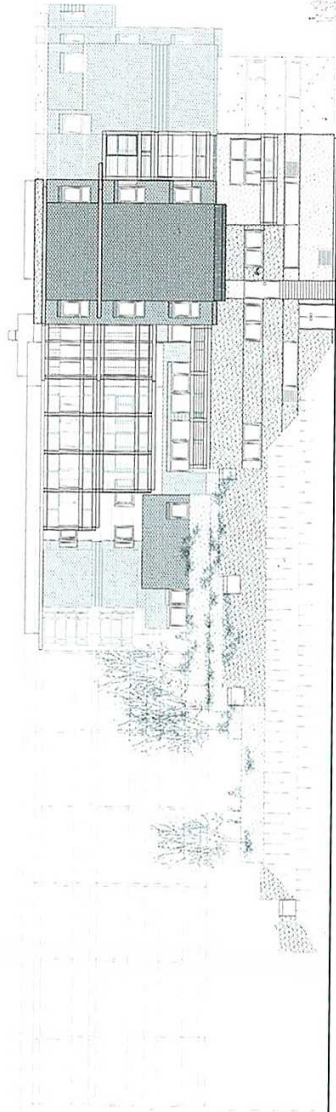
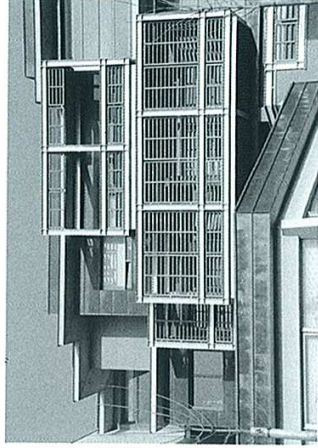


West elevation



South elevation



The two upper storeys, rotated by 30°, determine the building's appearance | Full-height glazing creates a relationship between indoors and outdoors | Unusual copper cladding grille on the volumes of the south-west facade



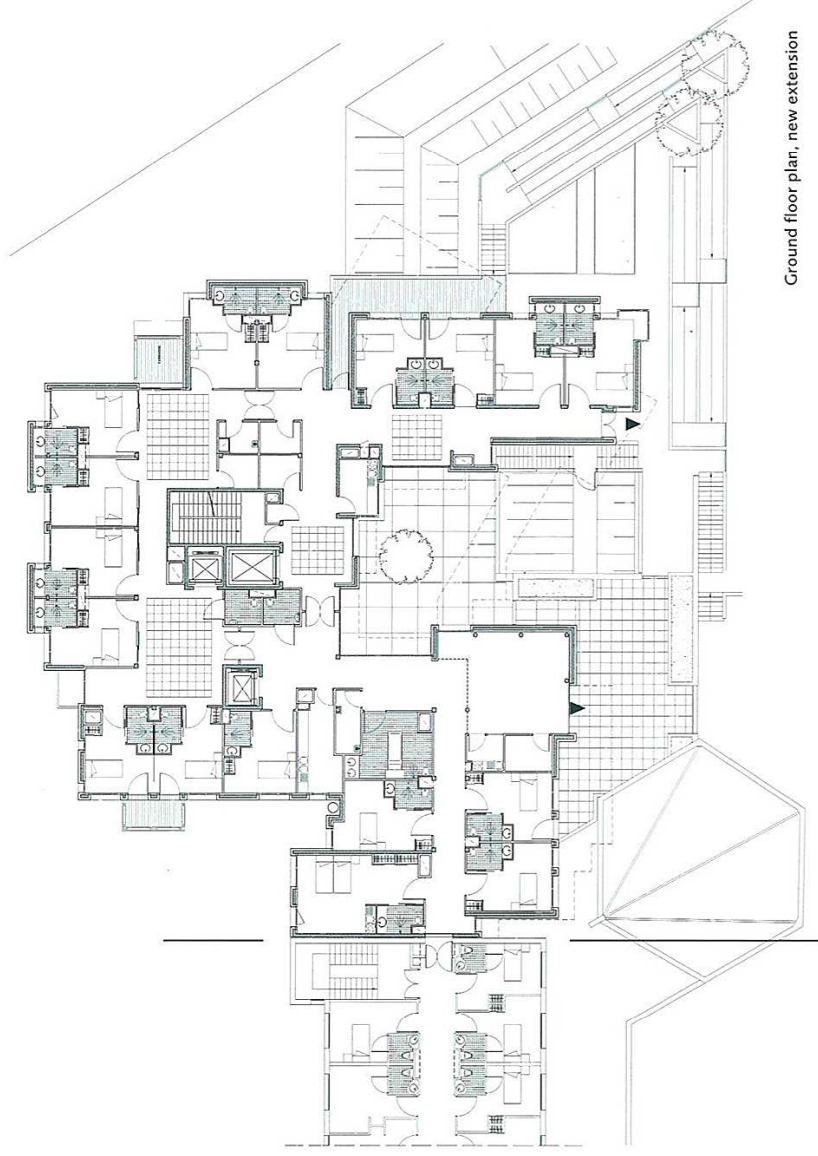
## "Plaine de Scarpe" Nursing Home and Home for the Elderly

Lallaing, France

Architect	Yann Brunel
Client/Operator	Société de Secours Minière du Nord
Completion	2006
Useable floor area	new extension 3,978 m <sup>2</sup> existing building 7,065 m <sup>2</sup>
Units/Capacity	140 geriatric residents, 17 Alzheimer residents

The elongated L-shaped complex is capped by a distinctive stepped, pyramidal extension at its south-west end and is a modernisation and refurbishment of the existing "Plaine de Scarpe" nursing home built in the 1970s that no longer fulfilled contemporary requirements. In addition to providing disabled access, the competition submission in 2000 divided the existing three-bed rooms into a series of single rooms of different character and proposed a new extension providing space for a further 53 residents, including a wing for Alzheimer sufferers, modern therapy rooms and communal spaces. Yann Brunel's design exceeded the requirements of the brief and





Ground floor plan, new extension

challenged the wisdom of generally-applicable uniform solutions for housing for the elderly. His design aims to provide a variety of quite different spaces that cater for residents with different characters and needs.

Four different types of accommodation were designed: a "conventional living area" with a spacious bathroom designed to accommodate the needs of geriatric residents; a "terrace type" featuring direct access to an outdoor space; a suite, also known as "therapeutic studio", that can be arranged flexibly, for example using sliding doors, and is conceived especially for couples;

and lastly a "communicative living area" for more gregarious residents with a greater desire to interact with one another. Double doors, which can be left open as required, entrance areas in front of the rooms, and corridors that widen to form communal areas with seating encourage contact between the residents and their neighbours.

The solidity of the brickwork and the high quality of the materials communicate a feeling of homeliness and comfort. The 30-degree rotation of the two upper storeys and the indented frames of the galvanised steel balconies lend the building a distinctive external appearance.

